



JAN EVANGELISTA PURKYNĚ UNIVERSITY IN ÚSTÍ NAD LABEM



FOREIGN STUDENT GUIDE



Academic Year 2024/2025

Czechia



Jan Evangelista Purkyně University in Ústí na Labem

■	Why Study at UJEP in Ústí nad Labem?	5
■	A Glimpse at the History of our University	8
■	University Structure	11
■	Facts and Figures	12
■	Units of J. E. Purkyně University in Ústí nad Labem	14
■	ECTS Information Package	24
■	Studies at UJEP – Main Regulations	28
■	Structure of Study Programs Taught in Czech	34
■	Study Programs and Courses Taught in Foreign Languages and their Structure.	46
■	Double-degree Study Programs	54
■	Czech Language Course for Foreigners	58
■	UJEP Participation in the Erasmus+ Program	60
■	Contacts	63
■	Ústí nad Labem City and the Ústí Region.	67
■	Czechia / Basic Information	69

Publisher:

J. E. Purkyně University in Ústí nad Labem
External Relations Office
Pasteurova 1, 400 96 Ústí nad Labem
Czechia
Phone: +420 475 286 277
en.ujep.cz

© J. E. Purkyně University in Ústí nad Labem 2024

All information contained in this brochure is subject to change.

J. E. Purkyně University in Ústí nad Labem (UJEP) reserves the right to alter any details presented in this Guide without notice. The UJEP cannot accept any liability arising from changes, errors or omissions.

Co-funded by the
Erasmus+ Programme
of the European Union



Why Study at UJEP in Ústí nad Labem
A Glimpse at the History of our University
University Structure
Facts and Figures

Dear students and colleagues,

welcome at the university in Ústí nad Labem, named after the world-famous scientist Jan Evangelista Purkyně. By coming to study, teach or work at UJEP, you decided to link one little phase of your life to Czechia – the heart of Europe.

There comes a time in every individual's life when a serious decision about the future has to be made. You may be at that point if you are going to complete your secondary education and are choosing the university studies to apply for, if you are already a university student and would like to spend one or two terms abroad, or if you are a university professor and would like to travel abroad to teach for several days, weeks, or to entirely change your place of employment.

To help you with your decisions and to support you during preparations for your new international experience, we created this informational booklet about the J. E. Purkyně University (UJEP) and your life in Czechia. Every change in one's life is very difficult and making the decision to travel abroad is twice as hard. But be sure you will not regret making the decision to travel to Usti nad Labem and to UJEP.

The university we invite you to visit is located in a North Bohemian town of rich industrial and cultural history, located in the astonishing valley of the river Elbe. This environment creates an excellent base for natural science as well as environmental and also economic fields of study. Equally, the varied history of the region, abundant cultural and social opportunities, and proximity to other centres such as Czech capital city Prague or Dresden in Germany create a unique basis for your development in social sciences, humanities, and arts.

UJEP is one of the leading agents supporting and influencing significantly the development and quality of life of the whole region in all its aspects. By training young and professionally

educated people, the university supports regional transformations that are socially just, economically effective, and environmentally sustainable. The existence of a strong university such as UJEP in the region has also motivated entrepreneurs to establish and develop new enterprises, creating a viable research and educational ecosystem in the region.

You can expect to make a number of new friends in a pleasant university environment, which will offer cultural along with sports opportunities, as well as intellectual enhancement. You can also look forward to experiencing beautiful scenery and a lot of new-life and work opportunities. You will become a respective part of a large academic community and will be given the opportunity of not only being a simple consumer of information, but also demonstrating your skills and ideas.



If you are still thinking over if you made the right choice, here are some of the top reasons that could help you to feel satisfied. You will spend a great time:

- at an open, dynamically developing university,
- at the university that offers a wide range of study programs, yet always emphasizing interdisciplinary approaches,
- in a strategic location between Prague (the capital city of Czechia) and Dresden (the capital city of Saxony, Germany),
- surrounded with beautiful areas of national park and three landscape protected areas,
- feeling the turbulent history of the region,

Why Study at UJEP in Ústí nad Labem?

- experiencing excellent conditions for sports and cultural life,
- enjoying lower living expenses in comparison to other regions,
- and of course finding a variety of opportunities to develop your skills, meeting new people, and maybe establishing your future career in Ústí nad Labem.

I hope all those of you who decide to visit Ústí nad Labem briefly or for an extended period will enjoy your time here and return to your Ústí Alma Mater in the future.

Looking forward to meeting you at our university,

Pavel Raška
Vice-Rector for Internationalisation





Before you make up your mind, we would like to suggest 10 crucial reasons for spending at least one stage of your life at J. E. Purkyně University in Ústí nad Labem:

1. A young, open, dynamically developing university.
2. A wide range of study programs and fields of study.
3. Strategic location – between Prague (the capital city of Czechia) and

A Glimpse at the History of our University

Dresden (the capital city of Saxony, Germany).

4. Beautiful surrounding areas, a protected nature reserve, Porta Bohemica.
5. Interesting history of the region, a number of preserved historical monuments.
6. Excellent conditions for students interested in sports and/or arts.
7. Excellent cultural points of interest on both, the Czech and German, sides of the border.
8. Lower living expenses in comparison to other regions, quality accommodation with broadband Internet access.
9. A wide range of opportunities for acquiring a social grant.
10. The opportunity of acquiring paid residency and/or part-time employment.

We hope all those of you who decide to visit Ústí nad Labem briefly or for an extended period will enjoy returning to their Ústí Alma Mater.

The University in Ústí nad Labem bears the name of Jan Evangelista Purkyně (1787–1869), the famous Libochovice-born Czech, considered to be one of the most significant natural scientists and physicians.

Higher education in Ústí nad Labem has had almost 60 years of its tradition. In September 1954, the Pedagogic High School of Ústí nad Labem was founded as the first teacher training high school, and the second high school in the Northern Bohemia region.

A government decree of September 1959 established a new Pedagogic Institute in place of the Pedagogic High School, of which the aim was to organize the complex education of elementary school teachers. Another decree of August 1962 removed pedagogic institutes from the authority of Regional People's Committees and related them directly to the Ministry of Education and Culture. This leap granted the highest level of independence and prestige to the Institute.

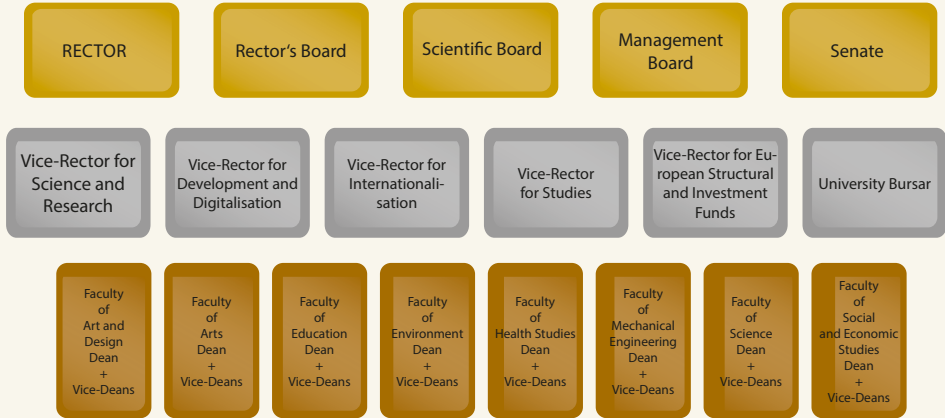
The significant development to follow was the establishment of the Pedagogic Faculty

in 1964. Since that time the Pedagogic Faculty has become the only training institution in the region, training primary (and later also secondary) school-teachers. In 1977, there were significant changes in both the content and extent of activities. Under the new educational system – a unified five-year preparation course for middle-school teachers (5th–12th grade) was introduced, placing the Pedagogic Faculty on the level of other university faculties. A five-year course for 1st–5th grade elementary school teachers was also available. The new higher education legislation permits organization of state viva examinations at the faculty. Students graduating with the faculty's high school diploma could pass a state viva examination and acquire the degree of Doctor of Pedagogy (PaedDr.).

The political and social changes in the country after November 1989 have significantly affected the life of the Pedagogic Faculty. The Ústí nad Labem region was badly affected at the Communist times by mining and heavy industries, and was unattractive to professionals from other regions. On the contrary, due to bad environmental conditions, there was a heavy

outflow of qualified workers. Under these circumstances, the faculty members and staff realized that teacher training should be incorporated into the wider framework of professional education, and as a result, Jan Evangelista Purkyně University in Ústí nad Labem was established according to the decree of the Czech National Council of 9 July 1991, which took effect on 28 September 1991.

The University consisted of three faculties (Faculty of Education, Faculty of Social & Economic Studies and Faculty of Environment) and two Institutes (Institute of Slavonic & German Studies and Institute of Roma Culture Studies) at the time of its foundation in 1991. In September 1993 the Institute of Artistic Culture was established: and was transformed into the Faculty of Art & Design in 2000. The Department of Technical Education of the Faculty of Education became the Institute of Production Technology & Management in autumn 1998. In 2003 the Institute of Health Studies was founded. Resulting from the transformation of the Faculty of Education, two new institutes (Institute of Science, later the Faculty of Science, and Institute of Humanities) loomed in 2005. In 2006 the Institute of Production Technology and Management was transformed into the Faculty of Production Technology and Management (currently: Faculty of Mechanical Engineering) and the Institute of Humanities was transformed into the Faculty of Philosophy (currently: Faculty of Arts). The youngest University branch is the Faculty of Health Studies (2012).



■ Faculties	8
■ Number of academics	692
■ Number of non-academics	445
■ Enrolled Students	7 927
■ Enrolled female students	5 139
■ Enrolled male students	2 788
■ Number of students in Bc study programs	5 670
■ Number of students in Mgr study programs	1 985
■ Number of students in PhD study programs	272
■ Students graduating annually (year 2022)	1 187
■ Number of study programs taught in Czech	318
■ Number of study programs taught in foreign language	9
■ Degrees awarded Bc. (Bc.A), Ing., Mgr. (Mg.A), Ph.D.	
■ Erasmus Outgoing students (Academic year 2021/2022)	91
■ Erasmus Incoming students (Academic year 2021/2022)	75

**Units of J. E. Purkyně University
in Ústí nad Labem**

ECTS Information Package

Faculty of Art and Design (FUD)

The faculty was established in 1993, originally as an Institute of Arts. The turn-point in its career was the year 2000 when the institute was transformed into the Faculty of Art and Design. The concept of the faculty was originally based on the traditional art and crafts production, rooted in different local branches of glass, ceramic and fabric manufacturing of Usti region. Nowadays the FUD is considered one of the leading art and design schools in Czechia.

During last 20 years the Faculty of Art and Design has won a reputation of expanding flexible school offering study programs in art, design, graphic design, photography and electronic media including master program in Photography and Time Based Media in English, PhD program in Visual Communication open for international



Units of J. E. Purkyně University in Ústí nad Labem

applicants. Faculty cooperates with galleries, museums, schools and other international partners in EU and outside EU as well. Particular faculty departments co-work with Czech and foreign manufacturers and institutions in specific projects. The projects are open for international students.

Since October 2008 the faculty has been situated in the newly rebuilt and top quality-equipped building on the territory of the UJEP campus in the centre of Ústí nad Labem. Here, one finds studios with up-to-date equipment, assembly halls, high-tech classrooms, workshops, printing facilities and a computer centre. The faculty runs a book production in own publishing house.

Approximately 400 students from all Czechia and abroad have enrolled within the Bachelor, follow-up Master and Ph.D. study programs up to the present day.

Contact:

Pasteurova 9, 400 96 Ústí nad Labem
Czechia

Phone: +420 475 285 111

www.fud.ujep.cz

Faculty of Arts (FF)

The Faculty of Arts was founded on September 1, 2006 by merging the Institute of Humanities, which then had been a part of the university since 2005 and accredited new non-educational study programs in the course of the transformation of the Faculty of Education of the J. E. Purkyně University.

The Faculty of Arts is the only humanities-oriented institution conducting research activities in the Northwest Bohemia region. Research activities are primarily focused on areas related to the specifics and needs of the region, thus fulfilling the social relevance. The emphasis is on the national and international context of the discourse; mainly the main research issues that accomplish social relevance of the research, which has an indisputable social benefit.

1) Historical Research emphasizes the issue of border areas, cultural transfers, Czech-German (Czech-Saxon) relations.
2) Research in the Field of Cultural Heritage is focused on documentation of monuments, monument care, restoration and preservation of the cultural heritage, including the cultural landscape.

3) Philological Research is focused on German language and literature, with an emphasis on intercultural German Studies.
4) Political Research responds to the issues of electoral systems, electoral behaviour (including gender issues), regional and local government policies, manifestations of extremism and racism (with an emphasis on the Czech-Saxon region).
5) Research in other humanities (Philosophy, Ethics) is focused on the issue of the development of civil society and is related to teaching social science subjects at primary schools and high schools (specialised didactics) including teaching activities focused on public space.

The Faculty of Arts also either ensures or participates in teaching-focused study programs. About 1200 students enroll at the faculty.

Contact:

Pasteurova 13, 400 96 Ústí nad Labem
Czechia
Phone: +420 475 283 294

<https://ff.ujep.cz/>

Faculty of Education (PF)

The Faculty of Education is at the frontier of shaping a person's personality in various spheres of society's life for more than 60 years. Those who venture here — to learn, research, teach, work, and build relationships – join almost 3000 students (both daily and part-time students).

Their professional education is provided by 10 academic departments, the Centre for Pedagogical Practice, Language Centre and the Lifelong Learning Centre.

Its mission is to provide quality **higher education to the pre-school, primary, lower and upper secondary school teacher trainees, and prospective special and social pedagogy professionals**

in undergraduate and post-graduate study programs including master study programs.

The faculty also provides **PhD study in the field of Czech studies, music**

education, visual art education and primary science education. Habilitation and professorial procedures are provided in the field of music education and visual art education.

Education provided beyond the frame of teacher training and school education is represented by Czech for public communication undergraduate courses, and Sport and health postgraduate courses.

The importance of education is enhanced by the strong incorporation of inclusion and the diversity of students who are interested in both classical and non-traditional topics in their live experiences.

Quality as major objective also applies to the activities of the faculty Lifelong Learning Centre where numerous lifelong educational study programs and courses are offered mainly to teachers and other educators.

Contact:

České mládeže 8
400 96 Ústí nad Labem
Czechia
Phone: +420 475 283 111

www.pf.ujep.cz



Faculty of Environment (FŽP)

The Faculty of Environment is one of the three original faculties founded back in 1991. The study programs have cross-sectional and interdisciplinary character and reflect contemporary environmental research issues. The mission of the faculty is to develop interdisciplinary education and research activities and to combine sustainable development focus with specialized study fields. Various scientific disciplines concerning, e.g. chemistry, biology, biochemistry, management, biotechnology, geoinformatics can be studied at the faculty.

Research activities of the faculty are focused on the development focus of research teams in the branches of:

- 1) Technologies for environmental protection and removal of environmental pollutants
- 2) Chemical recycling of waste materials (plastics, textile, biomass)
- 3) Landscape restoration

Units of J. E. Purkyně University in Ústí nad Labem

- 4) Study of environmental anthropogenic disturbances
- 5) Geography Information Systems application

Student and staff mobility is mainly realized within the Erasmus+ program. Ministry of Education of CR programs and other exchange programs are used as well. The faculty cooperates closely with many European and Non-European institutions (e.g. Envirocentre in Glasgow, Scotland, Umweltzentrum Dresden, Germany) within internships, lecturing and research activities.

The faculty enrolls several hundreds of students each year, studying both in full-time and part-time study programs.

Contact:

Pasteurova 3632/15
400 96 Ústí nad Labem
Czechia
Phone: +420 475 286 222

www.fzp.ujep.cz

Faculty of Health Studies (FZS)

The Faculty of Health Studies UJEP is the youngest faculty of the university. It was established on the 1st of March in 2012 as a result of transformation of the Institute of Health Studies UJEP. The establishment of the Institute of Health Studies in 2003 was the necessity driven by new special requirements on education appeared in Health care because of the membership of Czechia in the EU and because of the demand from the side of regional health care settings. Tertiary education follows the concept of educational process in health care professional fields. It allows getting qualification in non-medical professional branches and carrying out professional activities related to health care services.



In the field of science and research, faculty's departments are focused on the issues related to their specific fields of education, specifically theoretical, clinical, medical and nursing branches with the emphasis on occupational therapy, physiotherapy, midwifery, pediatric nursing, general nursing and ambulance. The faculty has seven accredited fields of study in bachelor degree: occupational therapy, physiotherapy, midwifery, general nursing, pediatric nursing, paramedic studies and newly radiological assistance. All of them are offered as full-time and also most of them also as a part-time degree programs and two accredited field of study in master degree: Organization and development in healthcare facilities offered as full-time and part-time degree program and also Teaching of specialized subjects for medical schools offered as a full-time degree program.

In 2021 was established a Research center which focuses on grants and international projects. To improve the qualification of academic staff and students two laboratories were set up: the Laboratory for human motion study and Laboratory of prevention and health support. The laboratories are implementing grant activities carried out by the academic team and cooperating with other research centers

in the Czech Republic and abroad. The Faculty together with the Regional Hospital established 12 clinics including, ophthalmology, radiology, neurosurgery, cardiology, gynecology and obstetrics settings. Clinical and practical training within accredited degree programs and related research and development activities are carried out there.

The faculty has around 1100 students.

Contact:

Sociální péče 3652/13

400 11 Ústí nad Labem

Czechia

Phone: +420 475 284 231

<https://fzs.ujep.cz/cs/>

Faculty of Mechanical Engineering (FSI)

The Faculty of Mechanical Engineering was established on the 1st of September, 2006. Since then, the faculty has achieved many milestones including new study programs' accreditation, construction of the new modern building CEMMTECH (Centre of Materials, Mechanics and Technologies) and some national and international projects participation.

The faculty offers a diverse range of study programs tailored to meet the contemporary demands of the industry, with a strong emphasis on collaboration with companies in the Usti region. Their educational and research activities primarily encompass the fields of materials, technologies, technical design, automation and energetics.

Currently, they offer a comprehensive selection of 6 bachelor, 5 master and 1 doctoral study program. They prioritize practical knowledge, ensuring that students acquire the skills to set up, operate, and effectively handle modern instrumentation

Units of J. E. Purkyně University in Ústí nad Labem

and methods commonly used in the industry.

They maintain close partnerships with industry leaders, especially in areas such as nanomaterials, modern automation technologies, additive technologies, Industry 4.0, advanced measurement techniques, and more. Actively participating in the energy transformation of the Usti region, our primary focus centers on advanced energy storage systems and the production and utilization of green hydrogen. Furthermore, they lead or engage in various projects related to materials and technologies applied in the field of energetics.

At present, the faculty accommodates approximately 500 students, encompassing both part-time and full-time programs.

Contact:

Pasteurova 7, 400 01 Ústí nad Labem
Czechia

Phone: +420 475 285 558

www.fsi.ujep.cz

Faculty of Science (PřF)

The Faculty of Science is the region's leading institution for natural sciences education and research. They offer programs at all academic levels and collaborate with local and international partners.

Diverse Study Opportunities

With six departments and two research centers, they provide over 30 undergraduate, master's, and doctoral programs in various study modes.

Their Mission

Their goal is twofold: to advance natural sciences education and enhance the university's scientific and research foundation. They aim for greater integration in European research networks and provide high-quality education from bachelor's to doctoral levels, preparing graduates for success in both academia and the job market.

The Heart of Scientific Endeavors

The main faculty building, known as the Centre for Natural Sciences and Technologies (CPTO), is where students and faculty members converge to embark on their academic journeys.

Key Research Areas

Their research spans computer physics, chemistry and chemical engineering, molecular simulation methodology, solar energy processes, plasmas, plasmachemistry, thin layers and surfaces physics, biosensors, microbiology, botany, zoology, application geography, environmental geography, country ecology, country synthesis, country planning, and analytical chemistry methods. They also conduct intensive research in the area of nanomaterials, biotechnologies, and bio-nanomedicine.

Why Choose Them?

Known for our dynamic development and personalized approach, they offer scholarships and support to help students succeed.

Life at the Faculty

Experience a balance of challenging but friendly academics and vibrant student life, with lectures, social events, and extracurricular activities.

Employment

Graduates find employment in public administration institutions, bodies and institutions of the European Union, nature conservation, land-use planning, laboratories, research institutes, in tourism, as network administrators or programmers and developers of web applications in the public and private sector. Last but not least, some of their graduates work as natural sciences teachers at primary and secondary schools.



Contact:

Pasteurova 3632/15
400 96 Ústí nad Labem
Czechia
Phone: +420 475 286 661

<https://prf.ujep.cz/cs/>

Faculty of Social and Economic Studies (FSE)

The Faculty of Social and Economic Studies is the only public faculty aimed simultaneously at both economics and social work studies in the Ústí region. It was established in 1991 and its main mission is to prepare qualified specialists for both, the public and private spheres.

Lectures take place in up-to-date classrooms equipped with all the necessary technical support. Several computer rooms and an internet café are at students' disposal in the faculty building itself. Apart from the tuition, the faculty also supports sports and other interest-based activities of our students (e. g. tennis or bowling tournaments).

Generally high standard of education is also maintained by the support of specialized workplaces. One of the significant workplaces is the City&Guilds accredited language qualification center created on the basis of the Department of Foreign Languages. It carries out its activities with the support of the British Council and the Ministry of Education, Youth and Sports of Czechia.



Contact:

Moskevská 54, 400 96 Ústí nad Labem
Czechia
Phone: +420 475 284 718

www.fse.ujep.cz

General information

The average cost of living for students in Ústí nad Labem is approximately 350 EUR (8,500 CZK) per month (including accommodation in the halls of residence, meals at a students' canteen and other costs). The expenses are higher at the start of studies (or the beginning of term) – as one should pay for a student card, city transport season card, library registration etc. (see below).

Catering Services

Catering for university students and employees of UJEP is provided by the canteen located in the Campus (Pasteurova 3632/15, 400 96 Ústí nad Labem) and by "50 bar" located next to the Faculty of Education (České mládeže 8, 400 96 Ústí nad Labem). Further information to be founded [here](#).

Accommodation

Students have the option of staying in halls of residence, further information to be founded [here](#).

Student card

Student card is issued in the form of a chip card, available in two versions:

- a) Without an ISIC licence
- b) With an ISIC licence (full-time students only)

Further information to be founded [here](#).

City transport

Student season ticket includes special fares for students under 26 and is available on providing a student chip card at the Dopravní podnik Ústí nad Labem. Further information to be founded [here](#).

Library fee

Registration in the libraries of UJEP is free of charge.

Further information to be founded [here](#).

Students can also register at the North Bohemian Research Library (Severočeská vědecká knihovna). Further information to be founded [here](#).

1. UJEP units provide university education within the scope of study programs accredited by the CR Ministry of Education, Youth and Sports. Bachelor's study programs prevail within the fields of study on offer. Doctoral study programs are accredited at the Faculty of Arts, the Faculty of Art and Design, the Faculty of Environment, the Faculty of Education, the Faculty of Mechanical Engineering, the Faculty of Science, the Faculty of Social and Economic Studies. The UJEP Study and Examination Rules specify the conditions for studies in bachelor and master study programs.
2. Bachelor study programs are of standard duration between 3 and 4 years, they are practically focused and form the basis for potential subsequent studies in follow-up master programs. Graduates acquire a university diploma with the "Bc." degree.
3. Following master studies take 2 years, they enable improvement of theoretical knowledge and develop creativity. Graduates acquire a university diploma with the "Mgr." or "Ing." degrees – depending on the field of studies.
4. Doctoral study programs are of three years or four years in duration, they focus on scientific research and independent creative work. Graduates acquire a university diploma with the "Ph.D." degree.
5. The Academic year commences in the second half of September of the calendar year 2023 and ends in the first half of September 2024. The Academic year is divided into winter and summer semesters. Each semester includes teaching (usually 14 weeks) and examination periods (usually 5 weeks). The last semester of the bachelor and master programs is shortened (usually 10 weeks).
6. Studies take place in attendance and combined form, tuition usually takes place in the form of lectures, seminars and tutorials. Tutorials and seminars are usually obligatory classes. Combined studies are intended for employed students and take the form of several multiple day education courses.

7. Foreign students are accepted for attendance studies only.
8. The basic unit of the study program is a subject of study. The study program classifies subjects according to their status as follows:
 - a) obligatory subjects - must be taken to graduate from the relevant study program,
 - b) compulsory-optional subjects – are part of the module from which a minimum number of subjects must be taken, or a minimum number of credits must be acquired to graduate from the relevant study program,
 - c) facultative subjects – are other subjects from the relevant study program and depend on the student's own choice.
9. UJEP uses the credit system based on the principles of the European Credit Transfer System (ECTS). The recommended annual study plan is of 60 credits proportionately divided among the subjects in the plan regarding the amount of study necessary for taking these subjects.
10. The credit tests and examinations students take and acquire credits for as registered in the given academic year, are a method of verifying the progress of one's studies. The subject may be registered twice during the study program (each registration allows a maximum of 3 attempts). A state bachelor's examination may only be applied for after 180 credits are acquired, application for the follow-up master program final examination is conditioned by the acquisition of 120 credits.
11. The allocated number of credits is not dependant on how well the student passes the relevant subject. How well the student does in the subject is expressed by classification of the examination:
 - a) excellent or 1 (grade A),
 - b) very good or 2 (grade B–C),
 - c) good or 3 (grade D–E),
 - d) failed or 4 (grade F).

12. Progress to the next year of studies is specified by the UJEP Study and Examination Rules. At entering the second year of study, the student is to have acquired the following:

- a) in the field of arts on acquisition of at least 54 credits,
- b) in the field of technical sciences on acquisition of at least 30 credits,
- c) in other programs on acquisition of at least 45 credits.

13. One's studies are completed by passing the state bachelor's examination, including defense of the bachelor's dissertation; state final examination in follow master's studies, including defense of the diploma thesis; and state doctoral examination, including defense of the scientific work for doctoral programs. The graduate acquires a university diploma supplemented with a complete list of subjects taken, listed in the Diploma Supplement.

14. For all enrolled studying in study programs in the Czech language studies are free of charge (with the exception

of fees for acceptance proceedings – approx. CZK 500). Studies in programs accredited in a foreign language (English, German) are subject to fee.

Academic year 2024/2025

Winter semester starts in the second half of September and ends in the first half of February. Christmas holidays are in the second half of December.

Summer semester starts in the second half of February and ends at the end of June. Summer holidays are in July and August.





Our university is a diverse unity whose advantage is the variety of study programs, ranging from social-economic and nature up to technical sciences. The unique regional character of the university enables students of nearly all study programs to enjoy the advantages of combining theoretical knowledge and practice (cooperation with regional companies and institutions on implementing new technologies, carrying out economic analyses, performing environmental protection activities, providing social and pedagogic assistance, mapping and conserving cultural heritage, providing health care and physiotherapy services, creating modern design, etc.) This practical aspect also has an international character. The university widely participates in both EU (e.g. Erasmus+) as well as national programs of development supported by the Ministry of Education, Youth and Sports and the Ministry of Foreign Affairs.

The ample dormitory capacity and one of the highest accommodation scholarships in the Czechia that the university grants, along with the wide variety of available freetime activity options make UJEP a modern and attractive place to study.

- Most study programs are accredited for daily and distance studies
- BSc undergraduates are awarded the degree of Bc.
- MSc graduates are awarded the degree of Ing./Mgr.
- PhD postgraduates are awarded the degree of Ph.D.

Notes:

1) Forms of Study: F – full-time, C – combined (part-time);

Ⓢ – a field of study in which the faculty has acquired the authorization to perform state Viva examinations and grant the title of PhDr.

Ⓢ – a field of study in which the faculty has acquired the authorization to perform state Viva examinations and grant the title of RNDr.

FACULTY OF ART AND DESIGN

4-year BSc Study Programs/Fields

Code	Study program	Specialization	Studios	Form of Study ¹
B0213A310012	Fine Art		Time-Based Media Digital Media Photography Interactive Media Object – Space - Action Applied Photography	F
B0212A310007	Design	Design	Interior Design Ceramic Design Product Design Natural Materials Glass Fashion and Textile Design	F
		Graphic Design	Graphic Design 1 Graphic Design 2 Visual Design	F

2-year MSc Study Programs/Fields

Code	Study program	Code	Studios	Form of Study ¹
N0213A310017	Curatorial Studies			F
N0213A310001	Fine Art		Time-Based Media Digital Media Interactive Media Object – Space - Action Photography Applied Photography	F
N0213A310017			Curatorial Studies	F

Structure of Study Programs Taught in Czech

Code	Study program	Code	Studios	Form of Study ¹
N0212A310004	Design		Interior Design Ceramic Design Product Design Natural Materials Glass Fashion and Textile Design Graphic Design 1 Graphic Design 2 Visual Design	F

3-year PhD Study Programs/Fields

Code	Study program	Form of Study ¹
P0213D310001	Visual Communication	F, C

FACULTY OF ARTS

3-year BSc Study Programs/Fields

Code	Study program	Code	Study fields	Form of Study ¹
B0322A120006	Archival Science and Record Management	B0322A120006	Archival Science and Record Management	F, C
B0222A120023	Cultural History	B0222A120023	Cultural History	F
B0322A120007	Documentation of Historical Memorials	B0322A120007	Documentation of Historical Memorials	F, C
B0288A100005	Foundations of Humanities	B0288A100005	Foundations of Humanities	F, C
B0222A120022	History	B0222A120022	History	F, C
B0114A300115	History for Education	B0114A300115	History for Education (MINOR)	F, C
		B0114A300115	History for Education (MAIOR)	F, C
B0223A100010	Philosophy	B0223A100010	Philosophy (MINOR)	F
		B0223A100010	Philosophy (MAIOR)	F
B 6107	Humanities	6107R020	Social Sciences (two-subject study)	F
		6107R015	Human Studies focused Aesthetic	F
		7507R030	Social Sciences with an emphasis on Education (Two-Subject Combination)	F

Code	Study program	Code	Study fields	Form of Study ¹
B0114A300116	German Language and Literature for Education	B0114A300116	German Language and Literature for Education	F, C
B0312A200027	Political Science	B0312A200027	Political Science (MAIOR)	F
		B0312A200027	Political Science (MINOR)	F
B0114A300117	Social Sciences for Education	B0114A300117	Social Sciences for Education (MAIOR)	F, C
		B0114A300117	Social Sciences for Education (MINOR)	F, C
B 6701	Political Science	6701R008	Political Science (two-subject study)	F
B 7105	Historical Sciences	7105R060	Documentation of Historical Memorials	F, C
		7105R021	History (single-subject)	F, C
		7105R034	Cultural History	F
B 7310	Philology	7310R242	Intercultural German Studies	F, C
		7507R080	German for school practice	C
		7310R106	German Language and Literature (two-subject study)	F

Structure of Study Programs Taught in Czech

2-year MSc Study Programs/Fields

Code	Study program	Code	Study fields	Form of Study ¹
N0222A120028	History	N0222A120028	History	F, C
		N0222A120028	Archival Science	F, C
		N0222A120028	Care for cultural heritage	F, C
N0288A999999	Intercultural German Studies in the Czech-German Context	N0231A090012	Intercultural German Studies in the Czech-German Context	F
N0288A999999	Post-human studies	N0288A100002	Post-human studies	F, C
N0312A999999	Political Science	N0312A200140	Political Science (MAIOR)	F
		N0312A200140	Political Science (MINOR)	F
N 6107	Humanities	6107T020	Social Sciences (two-subject study)	F
		6107T021	Teaching Social Sciences for Middle School (two-subject study)	F

Code	Study program	Code	Study fields	Form of Study ¹
N 7105	Historical Sciences	7105T048	History (Single Subject)	F, C
		7105T034	Cultural and Historical Regional Studies	F
		7105T036	Cultural History	F
		7105T066	German Studies in the Central European Context	F
		7504T063	Teaching History for Middle School (single subject)	F
		7504T063	Teaching History for Middle School (two-subject study)	F
N 7310	Philology	7504T092	Teaching German Language and Literature for Secondary School (Two-Subject Combination)	F
		7504T092	Teaching German Language and Literature for Secondary School	F, C
		7310T339	German Philology in the Intercultural Czech-German Context	F

Structure of Study Programs Taught in Czech

Code	Study program	Code	Study fields	Form of Study ¹
N 7503	Primary School Teacher Education	7503T018	Teaching Foreign Languages for Basic Schools – German Language (Single Subject)	F, C
N0114A300111	Upper Secondary School Teacher Training in German Language and Literature	N0114A300111	Upper Secondary School Teacher Training in German Language and Literature	F, C
		N0114A300111	Upper Secondary School Teacher Training in German Language and Literature (MAIOR)	F
		N0114A300111	Upper Secondary School Teacher Training in German Language and Literature (MINOR)	F
N0114A300110	Upper Secondary School Teacher Training in History	N0114A300110	Upper Secondary School Teacher Training in History (MAIOR)	F, C
		N0114A300110	Upper Secondary School Teacher Training in History (MINOR)	F, C

Code	Study program	Code	Study fields	Form of Study ¹
N0114A300112	Upper Secondary School Teacher Training in Social Sciences	N0114A300112	Upper Secondary School Teacher Training in Social Sciences (MAIOR)	F, C
		N0114A300112	Upper Secondary School Teacher Training in Social Sciences (MINOR)	F, C

3-year PhD Study Programs/Fields

Code	Study program	Code	Study fields	Form of Study ¹
P0232D090042	German Philology	P0232D090042	German Philology	F, C
P 7105	Historical Sciences	7105V012	Czech history	F, C
P 7310	Philology	7310V104	German Literature	F, C

FACULTY OF EDUCATION

3-year BSc Study Programs

Code	Study program	Form of Study ¹
Teaching		
B0114A300124	English Language and Literature for Education	F
B0114A300124	English Language and Literature for Education (two-subject study)	F
B0114A300125	Czech Language and Literature for Education	F, C
B0114A300125	Czech Language and Literature for Education (two-subject study)	F
B0114A300126	Music Education for Education	F
B0114A300126	Music Education for Education (two-subject study)	F
B0114A300127	Choir Conducting for Education (two-subject study)	F
B0114A300128	Physical Education for Education (two-subject study)	F
B0112A300009	Teaching in Pre-schools	F, C
B0114A300129	Art Education for Education	F
B0114A300129	Art Education for Education (two-subject study)	F
B0114A300130	Music Education in Helping Professions	F
B0114A300131	Art Education in Helping Professions	F
Non-teaching Pedagogy		
B0111A190024	Andragogy	F, C
B0111A190027	Social Pedagogy	F, C
B0114A300132	Special Pedagogy – Intervention	F, C
Physical Education and Sports; Kinanthropology		
B1014A280013	Physical Education and Sports - specialization: Physical Education and Sports	F, C
B1014A280013	Physical Education and Sports - specialization: Outdoor Activities	F, C

¹) Will be open after approving by the Council for Internal Evaluation of UJEP.

²) Will be open in case of obtaining accreditation.

5-year MSc Study Programs

Code	Study program	Form of Study ¹
Teaching		
M0114A300001	Teaching for Primary School	C
M0114A300001	Teaching for Primary School	F, C
M0113A999999	Teaching for Primary School and Special Pedagogy	F, C

2-year MSc Study Programs

Code	Study program	Form of Study ¹
Teaching		
N0114A300124	English Language Teaching and Literature for Secondary Schools	F, C
N0114A300124	English Language Teaching and Literature for Secondary Schools (two-subject study)	F
N0114A300125	Teaching Czech Language and Literature for Secondary Schools	F, C
N0114A300125	Teaching Czech Language and Literature for Secondary Schools (two-subject study)	F
N0114A300126	Teaching Music Education for Secondary Schools, Primary Schools and Art Schools	F
N0114A300126	Teaching Music Education for Secondary Schools (two-subject study)	F
N0114A300127	Teaching of Choral Singing (two-subject study)	F
N0114A300128	Teaching Physical Education for Secondary Schools (two-subject study)	F
N0114A300129	Teaching Art Education for Secondary Schools, Primary Schools and Art Schools ²	F, C
N0114A300129	Teaching Art Education for Secondary Schools (two-subject study) ²	C
Non-teaching Pedagogy		
N0111A190021	Social Pedagogy	F, C
N0114A300130	Special Pedagogy – Counselling	F, C

Code	Study program	Form of Study ¹
------	---------------	----------------------------

Physical Education and Sports; Kinanthropology

N1014A280010	Sport and health	F, C
--------------	------------------	------

*) Will be open after approving by the Council for Internal Evaluation of UJEP.

**) Will be open in case of obtaining accreditation.

4-year PhD Study Programs

Code	Study program	Form of Study ¹
P0111D300013	Czech Studies Theory of Education	F, C
P0111D300014	Methodology of Primary Science Education	F, C
P0111D300018	Music Theory and Pedagogy	F, C
P0111D300019	Theory of Arts and Crafts	F, C
Fields for habilitation proceedings and proceedings for appointment of a professor: Music theory and pedagogy Arts and Crafts – theory and production		

FACULTY OF ENVIRONMENT

3-year BSc Study Programs/Fields

Code	Study program	Form of Study ¹
B0521A030007	Environmental Protection (Study fields: Nature and landscape conservation)	F, C
B0521A030007	Environmental Protection (Study fields: Environmental technology)	F, C
B0532A330020	Applied Geoinformatics	F, C

2-year MSc Study Programs/Fields

Code	Study program	Form of Study ¹
N0531A130012	Analytical environmental chemistry and toxicology	F
N0712A4130007	Technologies for environmental protection (Study fields: Environmental technology)	F
N 0712A130007	Technologies for environmental protection (Study fields: Waste management and circular economy)	F
N0532A999999	Environmental Geoinformatic	F, C
N0520A999999	Landscape Reclamation	F, C

3-year PhD Study Programs/Fields

Code	Study program	Form of Study ¹
P0588D13001	Environmental Chemistry and Technology	F
P0521D000000	Landscape reclamation and ecosystem services	F

FACULTY OF HEALTH STUDIES

3-year BSc Study Programs/Fields

Study programs	Code	Form of study
Midwifery	B0913P360007	F
General nursing	B0913P360018	F
General nursing	B0913P360018	C
Occupational therapy	B0915P360010	F
Occupational therapy	B0915P360010	C
Physiotherapy	B0915P360011	F
Physiotherapy	B0915P360011	C
Pediatric nursing	B0913P360029	C
Pediatric nursing	B0913P360029	F
Paramedic studies	B0913P360033	C
Paramedic studies	B0913P360033	F
Radiological assistance	B0914P360017	F
Biomedical engineering	B0914P999999	F

2-year Master Study program

Study programs	Code	Form of study
N0413P050003	Organization and development in Healthcare Facilities	F
		C
N0114A300084	Teaching of specialized subjects for medical schools	F
		C

FACULTY OF MECHANICAL ENGINEERING

3-year BSc Study Programs/Fields

Code	Study programs	Form of study
B0715A270018	Production Management	F, C
B0715A270019	Materials and Technologies in Transport	F, C
B0713A070004	Energetics	F, C
B0715A270010	Construction of Machines and Equipment	F, C
B0788P270001	Quality Management	F, C
B0715A270022	Materials Engineering	F

2-year MSc Study Programs/Fields

Code	Study programs	Form of study
N0715A270029	Production Engineering	F, C
N0715A270030	Materials and Technologies in Transport	F, C
N0715A070007	Energetics	F, C
N0715A270036	Engineering Mechanics and Automation	F, C
N0715A270039	Materials Engineering	F

4-year PhD Study Programs/Fields

Code	Study programs	Form of study
P0715A270023	Engineering Technology	F, C

FACULTY OF SCIENCE

3-year BSc Study Programs/Fields

Code	Study program	Form of Study ¹
B0532A330020	Applied Geoinformatics	F, C
B0613P140005	Applied Informatics	F, C
B0533A110020	Applied Nanotechnology	F
B0511A030020	Biology	F, C
B0114A300118	Biology for Education (two subject study)	F, C
B0533A110026	Computer Modelling in Science and Technology	F, C
B0531A130031	Chemistry and Toxicology	F, C
B0114A300120	Chemistry for Education (two subject study)	F, C
B0532A330032	Geography	F
B0532A330032	Geography (two-subject study)	F
B0114A330005	Geography for Education (two subject study)	F
B0114A300121	Informatics for Education (two-subject study)	F, C
B0541P170001	Mathematics in Business and Public Administration	F
B0114A300122	Mathematics for Education (two subject study)	F, C
B0114A300119	Physics for Education (two subject study)	F, C

2-year MSc Study Programs/Fields

Code	Study program	Form of Study ¹
N0531A130012	Analytical Environmental Chemistry and Toxicology	F
N0114A300115	Upper Secondary School Teacher Training in Chemistry (two-subject study)	F, C
N0613P140003	Applied Informatics	F, C
N0533A110052	Applied Plasma Technologies	F
N0114A300116	Upper Secondary School Teacher Training in Informatics (two-subject study)	F, C
N0719A110004	Applied Nanotechnology	F

Code	Study program	Form of Study ¹
N0511A030048	Biology – Applied biology and ecology – Experimental and cell biology	F F
N0114A300113	Upper Secondary School Teacher Training in Biology (two-subject study)	F, C
N0533A110037	Computer Modelling in Science and Technology	F
N0532A330020	Geography	F
N0114A300123	Upper Secondary School Teacher Training in Geography (two-subject study)	F
N0114A300117	Upper Secondary School Teacher Training in Mathematics (two-subject study)	F, C
N0114A300114	Upper Secondary School Teacher Training in Physics (two-subject study)	F, C

4-year PhD Study Programs/Fields

Code	Study program	Form of Study ¹
P0532D330032	Geographies of Transformations	F, C
P0533D110038	Computer Modelling in Science and Technology	F
P0719D110003	Applied Nanotechnology	F
P0533D110049	Applied Ion Technologies	F

FACULTY OF SOCIAL AND ECONOMIC STUDIES

3 year BSc Study Programs/Fields

Code	Study program	Code	Study fields	Form of Study ¹
B0413A050028	Regional Development and Public Administration	B0413A050028	Regional Development and Public Administration	F, C
B0311A050019	Economics and Management	B0311A050019	Economics and Management	F, C
B0923A240009	Social Policy and Social Work	B0923A240009	Social Policy and Social Work	F, C

2 year MSc Study Programs/Fields

Code	Study program	Code	Study fields	Form of Study ¹
N0413A050026	Regional Development and Public Administration	N0413A050026	Regional Development and Public Administration	F
N0311A050034	Economics and public sector Management	N0311A050034	Economics and public sector Management	F

4 year PhD Study Programs/Fields

Code	Study program	Code	Study fields	Form of Study ¹
P0311D050023	Regulation and Behavioural Studies	P0311D050023	Regulation and Behavioural Studies	F, C
P0311D050029	Applied Economics and Public Administration	P0311D050029	Applied Economics and Public Administration	F, C



FINE ART

2-year MSc Study Program/Field

Faculty of Art and Design

Code	Study program	Studio	Form of Study	Language
N0213A310002	Fine Art	Photography	F	English

The student of the following master's degree course of Photography and Time Based Media will undergo systematic and specialized training preparation for a career of an independent photographer, and will also experience the stimulating atmosphere of a students' community drawn from different cultural and language backgrounds. The high level of study is assured by the international experience of most of the team members who are knowledgeable lecturers (holding positions as visiting lecturers, with repeated foreign lecture activity, organisation of workshops, attendance at creative sessions and important exhibition activities) and also by their professional teaching of students within the developed and accredited, follow-master's course in photography in the Czech language.

The graduate of the course will be professionally equipped with systematic, structured knowledge and skills leading to a career as an independent artist, a creative executive of advertising and marketing agencies, graphical studios, or as a publisher. The student may also become a trustee of museums or galleries with photography collections and exhibition activities. The student of this branch will at the same time acquire the foundations of polemic-critical thinking, and will develop skills of perception, analysis and reflection of photography as an autonomous artistic discipline. The study concept will at the same time impart to the applicant's basic orientation in the Czech cultural environment, in the extended Central European visual culture framework and to acquire knowledge of the standing of photographic media within this context. A feature of the English variety of the photographic study is its major inter-disciplinarity and permeability, built on the coordinated cooperation of current studios (Photography, Applied and advertising photography and Interactive media).

Program supervisor:

MgA. Barbora Hájková, DiS.

Contact: MgA. Barbora Hájková, DiS.

Phone: +420 475 285 153

E-mail: barbora.hajkova@ujep.cz

Website: <https://fud.ujep.cz/ateliery/fine-art/>

HISTORISCHE WISSENSCHAFT

3-year PhD Study Program/Field

Faculty of Arts

Code	Study program	Code	Study fields	Form of Study	Form
P 7105	Historische Wissenschaft	7105V012	Tschechische Geschichte	F, C	German

A graduate of the doctoral study program in the field of Czech history (20th century History of the Czech Lands) will acquire good and reliable orientation in the field and excellent mapping within the respective specialization. The student will acquire an approach to manage the methodology and theory of historical science (including varied comparative aspects), will acquire an overview of the development of historiography and will be prepared for individual scientific

work in the field of history. A graduate in this field should be capable of executing and directing individual historical research, presenting results in the form of scientific publications and appearances in scientific conferences in Czechia and abroad. Graduates will be able to find employment in all institutions, which deal with historical subjects in the fields of Czech and Czechoslovak history, specific areas, in the field of Czech-German relations, in scientific institutions, archives, museums, the appropriate administrative institutes and more. Preparation for pedagogical activities also enables graduates of the Ph.D. study program to work as university lecturers and professors, either as employees of a university or as freelance co-workers, or workers with unemployment at a scientific workplace.

Program supervisor:

Doc. PhDr. Kristina Kaiserová, CSc.

Contact: Doc. PhDr. Kristina Kaiserová, CSc.

Phone: +420 475 282 623

E-mail: kristina.kaiserova@ujep.cz

Website: <https://en.ff.ujep.cz/>



GEOGRAPHIES OF TRANSFORMATIONS

4-year PhD Study Program/Field

Faculty of Science

Code	Study program	Form of Study	Form
P0532D330032	Geographies of Transformations	F, C	English

Geographies of Transformations

This doctoral study program develops our understanding of transformations of geographical systems (exploring causal roots, tracing transformative paths, narrating uncertainties) to address challenges of socio-environmental development at various institutional scales and in different regional contexts. The focus is on Exploring the feedback from collateral socioeconomic, cultural and environmental processes and their manifestation in space and places, the program develops a career path for experts in strategic, regional and environmental planning.

The major research topics include:

- Management of traditional cultural landscapes under the conditions of environmental change;
- Transition initiatives and urban adaptations to climate change;
- Changing policies and agents in shrinking cities;
- Effects of cultural globalization on sustainable livelihood in marginal areas;
- Visual presentation of changes in people's spatial behaviour;
- Governing ecological insecurity in a trans-national comparative perspective.

The program is interdisciplinary and international in its nature and prepares students for their further career in strategic regional and environmental planning in public and private sectors, NGOs, as well as in research organizations.

Program supervisor:

doc. Mgr. Pavel Raška, Ph.D.

Contact: doc. Mgr. Pavel Raška, Ph.D.

Phone: +420 475 286 777

E-mail: pavel.raska@ujep.cz

Website:

<https://prf.ujep.cz/en/study-programmes>

COMPUTER MODELLING IN SCIENCE AND TECHNOLOGY

4-year PhD Study Program/Field

Faculty of Science

Code	Study program	Form of Study	Form
P0533D110038	Computer Modelling in Science and Technology	F	English

The doctoral study program prepares its students for solving demanding computational problems in science and technology using high performance computers. The students will deepen their knowledge in selected parts of mathematics, physics, and computational methods. Compulsory courses, exams and the topic of the student's Ph.D. thesis are proposed by the student and his supervisor in the beginning of the study. The individual study plan of each student should include:

1. A course of mathematics;
2. A selected course of basic theoretical physics;
3. A selected course of physics focused on the selected research topic;
4. A selected advanced course of computer modelling.

The selected topic of the Ph.D. thesis must be in the field of computer modelling. A list of available topics involves different problems, e.g., computer simulation at the molecular level, mesoscopic modelling, computational fluid dynamics, modelling granular materials, aerosols, processes in plasma, astronomy and astrophysics.

Graduates will be able to find jobs mostly in the academic sphere, research, and industry or other companies dealing with high performance computing.

Program supervisor:
prof. RNDr. Ivo Nezbeda, DrSc.

Contact: prof. RNDr. Ivo Nezbeda, DrSc.

Phone: +420 475 286 821

E-mail: IvoNez@icpf.cas.cz

Website:

<https://prf.ujep.cz/en/study-programmes>

APPLIED NANOTECHNOLOGY

4-year PhD Study Program/Field

Faculty of Science

Code	Study program	Form of Study	Form
P0719D110003	Applied Nanotechnology	F	English

A doctoral study program Applied Nanotechnology follows the master study program of Nanotechnology. The doctoral program has multidisciplinary structure necessary for up-to-date research in nanotechnologies and material sciences generally. The topics have necessary overlaps to another science fields for broad education. The study of nanotechnologies, nanomaterials and their applications would provide students with deep background in topics related to the doctoral thesis. The study topics will be divided to the following groups:

1. Nanomaterial prepared by physical techniques;
 2. Nanomaterial prepared by chemical techniques;
 3. Bio nanotechnologies for bio sensing applications;
 4. Computer aided design of nanomaterial.
- A goal of the study is to prepare students with skills and knowledge in nano fields. The main interest will be on the techniques applicable in industry and not only in research laboratories as for example drugs, cosmetics, selfcleaning dyes, antibacterial

products, biomedical materials, etc. The students should be well prepared for academic research and industry research developing new nano featured materials. It will be supported by obligatory industrial training period during the doctoral study. Students will be encouraged to participate in management and marketing courses organized by the university. Experts from industry will hold short lectures for the students.

Program supervisor:
prof. RNDr. Pavla Čapková, DrSc.

Contact: prof. RNDr. Pavla Čapková, DrSc.

Phone: + 420 475 286 625

E-mail: pavla.capkova@ujep.cz

Website:

<https://prf.ujep.cz/en/study-programmes>

REGULATION AND BEHAVIOURAL STUDIES

4-year PhD Study Program/Field

Faculty of Social and Economic Studies

Code	Study program	Form of Study	Form
P0311D050024	Regulation and Behavioural Studies	F, C	English

More information about the program:

<https://www.fse.ujep.cz/en/regulation-and-behavioural-studies/>

English-taught Courses for Incoming Students

Updated offer of courses in foreign languages is available on:

<https://www.ujep.cz/en/course-catalogue>



Intercultural German Studies in the German-Czech Context

Cooperative double-degree study program at the Jan Evangelista Purkyně University in Ústí nad Labem and the University of Bayreuth (Germany)

Motivation & prospects

The binational Master's program offers a wide range of opportunities:

- Two MA degrees with one MA
- Intercultural experience abroad with little effort
- Contact with culture and students from all over the world
- Discover a common Bavarian-Bohemian cultural area
- Study in a flexible and free university system in Germany
- Deepen your knowledge of German

The degree program focuses on:

- German language, literature and culture with a focus on German-Czech encounters (UJEP)
- Foreignness, multicultural identities and multilingualism (UBT)
- Intercultural communication processes in language and literature (UBT)
- German literature as foreign literature and Germany as a foreign culture (UJEP, UBT)

This opens up a wide range of career prospects:

- Cultural institutions that initiate and support intercultural exchange and communication processes
- Educational and scientific institutions that are active in German-Czech cooperation
- Political institutions such as the European Union and institutions in the field of bilateral relations
- International business enterprises on the German-Czech market
- Subsequent doctoral studies at UJEP or another university

The Study Process

1st semester in Ústí nad Labem (30 ECTS) - Selection	2nd semester in Ústí nad Labem (30 ECTS) - Selection	3rd semester in Bayreuth (30 ECTS)	4th semester in Bayreuth (ECTS LP)
German-Czech language contact Czech themes and motifs in German literature of the 18th and 19th centuries	German-Czech phraseology The image of Czechs, Germans and Austrians in literature since 1918 (E) Migration literature from Czechoslovakia after 1945	Module: Intercultural Linguistics Module: Concepts of Cultural Studies literature since 1918 Module: Intercultural Literary Studies Module: Practice and Professional Orientation: Interculturality in Continuing Education Main research seminar freely selectable course	Module: Academic Master's thesis

Admission requirements

Enrolment

Admission to this study program requires that the candidate:

- Is enrolled at UJEP in Ústí nad Labem in the Master's degree program Intercultural German Studies in a German-Czech Context
- Has successfully completed at least 60 ECTS credits in the first two semesters

Language skills

UJEP students are exempt from a German language examination at the University of Bayreuth due to the admission requirements for the degree program at their home university. The language of instruction is German.

Selection procedure

Selection for the double degree program is based on:

- a selection interview,
- a curriculum vitae,

- a letter of motivation and
- the previous study results at UJEP.

Please use the following template for your application: <http://ff.ujep.cz/kger/studium/dvojity-diplom-s-univerzitou-bayreuth>

Dates

The selection procedure by a committee (UJEP/Bayreuth) takes place in the 2nd semester. The year abroad in Germany begins in the winter semester (October).

Funding

You are exempt from tuition fees at the partner university during your semester abroad. However, all students pay a semester fee of approximately €100.

It is generally possible to receive financial support for the study visit through the Erasmus+ program or other scholarships.

Contact

Jan Evangelista Purkyně University in Ústí nad Labem

Faculty of Arts

Department of German Studies

Pasteurova 3571/13

CZ-400 96 Ústí nad Labem

Program Coordinator

Prof. Mgr. Renata Cornejo, Ph.D.

E-mail: renata.cornejo@ujep.cz

URL: <http://ff.ujep.cz/kger/studium/dvojity-diplom-s-univerzitou-bayreuth>

Czech Language Course for Foreigners
UJEP Participation in the Erasmus+
Program

CONTACT

The Centre for Lifelong Learning (CCV PF UJEP)

The Faculty of Education

Jan Evangelista Purkyně University in Ústí nad Labem

Pasteurova 3544/1, 400 96 Ústí nad Labem, Czech Republic

Ing. Lenka Hřebejková, +420 475 283 176, lenka.hrebejkova@ujep.cz

THE CZECH LANGUAGE EXAMINATIONS FOR FOREIGNERS AND THE PREPARATORY CZECH LANGUAGE COURSE

More information is available here:

<https://www.pf.ujep.cz/cs/for-foreigners-для-иностранцев>

CCV PF UJEP cooperates with DOCEO Ltd., language school with state language examination licence that assists with obtaining visas, housing and secondary education qualification, see <https://www.oca-praga.cz/>

The courses are concluded with an official exam and the issue of the Certificate of Achievement.



UJEP Participation in the Erasmus+ Program

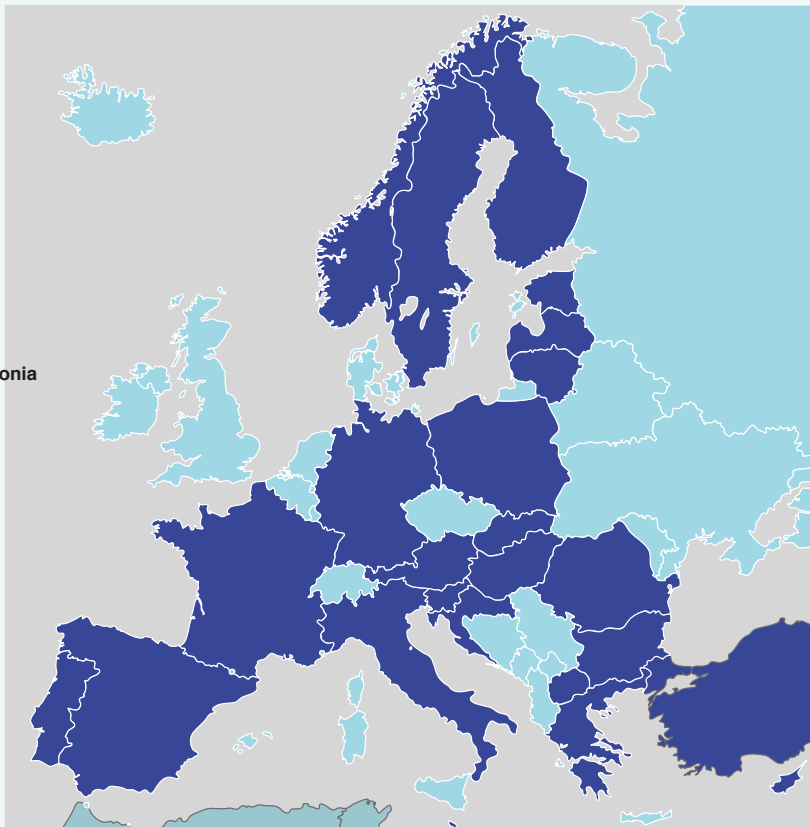
One of the advantages of our university is the opportunity of UJEP students to spend part of their study abroad, mainly with financial aid of the European Union. The most common form is the Erasmus+ Program by means of which every year UJEP students study at contractual foreign universities or realise their traineeships in institutions abroad.

Within the Erasmus+ Program, academic workers from European universities give lectures at UJEP and many academics leave UJEP to lecture in contractual universities every year.



Partner institutions in the ERASMUS+ program

- Austria
- Bulgaria
- Croatia
- Cyprus
- Estonia
- Finland
- France
- Germany
- Greece
- Hungary
- Italy
- Latvia
- Lithuania
- Malta
- North Macedonia
- Norway
- Poland
- Portugal
- Romania
- Slovakia
- Slovenia
- Spain
- Sweden
- Turkey



Faculty of Art and Design (FUD)

Pasteurova 9, 400 96 Ústí nad Labem

Vice-Dean for external relations:

Name: doc. Mgr. David Kořínek

Phone: +420 604 836 415

E-mail: david.korinek@ujep.cz

Vice-Dean for study:

Name: doc. Mgr. Michaela Thelenová

Phone: +420 475 285 153

E-mail: michaela.thelenova@ujep.cz

Faculty of Arts (FF)

Pasteurova 13, 400 96 Ústí nad Labem

Vice-Dean for external relations:

Name: doc. Mgr. Tomáš Velička, Ph.D.

Phone: + 420 475 286 420

E-mail: tomas.velicka@ujep.cz

Vice-Dean for study:

Name: PhDr. Jiří Koumar, Ph.D.

Phone: +420 475 286 412

E-mail: prodekan.stud.ff@ujep.cz

Faculty of Education (PF)

České mládeže 8, 400 96 Ústí nad Labem

Vice-Dean for external relations and internationalisation:

Name: Mgr. Jaroslava Jelínková, Ph.D.

Phone: +420 475 283 269

E-mail: jaroslava.jelinkova@ujep.cz

Vice-Dean for study:

Name: Ing. Mgr. Martin Černý, MSc.

Phone: + 420 475 283 374

E-mail: martin.cerny@ujep.cz

Faculty of Environment (FŽP)

Pasteurova 3632/15

400 96 Ústí nad Labem

Vice-Dean for external relations:

Name: Ing. Pavel Krystyník, Ph.D.

Phone: +420 475 284 153

E-mail: pavel.krystynik@ujep.cz

Vice-Dean for study affairs:

Name: Ing. Jan Popelka, Ph.D.

Phone: + 420 475 284 160

E-mail: jan.popelka@ujep.cz

Faculty of Health Studies (FZS)

Sociální péče 3652/13, 400 11 Ústí nad Labem

Vice-Dean for science and foreign affairs:

Name:

PhDr. Mgr. Patrik Christian Cmorej, Ph.D.

Phone: +420 475 284 312

E-mail: patrik.cmorej@ujep.cz

Vice-Dean for study:

Name: PhDr. Kateřina Tichá, Ph.D.

Phone: + 420 475 284 230

E-mail: katerina.ticha@ujep.cz

Faculty of Mechanical Engineering (FSI)

Pasteurova 7, 400 01 Ústí nad Labem

Vice-Dean for Foreign and External Affairs:

Name: Mgr. Klára Caisová, Ph.D.

Phone: + 420 475 285 558

E-mail: klara.caisova@ujep.cz

Vice-Dean for Studies and Lifelong Learning:

Name: Ing. Pavel Kraus, Ph.D.

Phone: +420 475 285 525

E-mail: pavel.kraus@ujep.cz

Faculty of Science (PřF)

Pasteurova 15, 400 96 Ústí nad Labem

Vice-dean for External and International Relations:

Name: RNDr. Regina Herma, Ph.D.

Phone: +420 475 286 663

E-mail: regina.herma@ujep.cz

Vice-Dean for study:

Name: RNDr. Martin Švec, Ph.D.

Phone: + 420 475 286 661

E-mail: martin.svec@ujep.cz

Faculty of Social and Economic Studies (FSE)

Moskevská 54, 400 96 Ústí nad Labem

Vice-Dean for external relations:

Name: Mgr. Jitka Laštovková, Ph.D.

Phone: + 420 475 284 718

E-mail: jitka.lastovkova@ujep.cz

Vice-Dean for study:

Name: Ing. Miroslav Kopáček

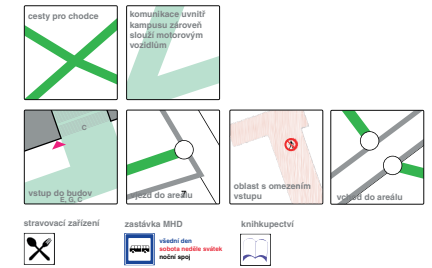
Phone: + 420 475 284 912

E-mail: miroslav.kopacek@ujep.cz

University campus



LEGENDA



A	CPTO Centre of Natural Sciences and Technologies Faculty of Environment
B	FACULTY OF ART AND DESIGN
C	RECTORATE BUILDING IT center (SIC, Student's cards) Erasmus+ office USV
D	FACULTY OF SOCIAL AND ECONOMICS STUDIES
E	RED AUDITORIUM
F	FACULTY OF ARTS
G	MULTIFUNCTIONAL CENTER (MFC) green auditorium purple auditorium violet auditorium
H	FACULTY OF MECHANICAL ENGINEERING
J	FACULTY OF SOCIAL AND ECONOMICS STUDIES
K	UNIVERSITY RESEARCH LIBRARY Bookshop Literary Cafe
L	FACULTY OF SCIENCE Department of Mathematics
M	VYCERRO
	FACULTY OF EDUCATION FACULTY OF SCIENCE FACULTY OF ARTS SPORTCENTER OF UJEP



Ústí nad Labem City and the Ústí Region
Czechia / Basic Information

The university town of Ústí nad Labem is an industrial metropolis in North-west Bohemia, with nearly one hundred thousand inhabitants. It has assumed its strategic position on the Elbe River – the river route to Hamburg – since the 11th century. In the opposite – upstream – direction it represents a symbolic entrance gate to Bohemia (Porta Bohemica). The history of the city has historically been rather troubled since it is linked to a number of military conflicts, regularly interrupting its periods of development. One of the bloodiest of the conflicts was when the armies of Napoleon were beaten by the allied armies of Russia, Prussia and Austria in 1813. More than a century later, the town suffered its last wartime hardship in April 1945 in the form of an air raid by the American 8th air squadron. The second most tilted tower in Europe – the tower of the Church of the Ascension of the Virgin Mary, deviating from its axis by nearly two metres – remains a memory of the event.

The industrial history of the town was initially linked to silver and tin mining and processing, later to the development of fabric industry and subsequently to brown coal

mines and the development of chemical industry, the establishment of sugar refineries, breweries as well as alcohol distilleries, to the introduction of steam navigation and construction of the Masaryk locks and electricity generation plant under the Střekov castle.

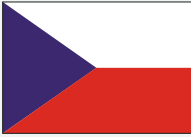
Today, the regional town of Ústí nad Labem offers varied cultural and social opportunities (for instance the Municipal Theatre of Opera and Ballet, the Theatre Studio, the Culture Hall, the National Hall, the museum of the town of Ústí nad Labem, two natural cinemas, a number of galleries, the North Bohemian Science Library, The amunicipal spa, the zoological gardens the Větruše look out tower and restaurant). The advantage of this regional town with regard to sport activities and activities in nature, is its location in the Elbe valley between the Czech Central Mountains and the Ore Mountains. Its proximity to the Czech Switzerland National Park and the Elbe sandstone protected nature reserve make the town and the whole Ústí region attractive to tourists.

The hilly terrain of the region with abundant bodies of water provides ideal conditions

for cycling, hiking (or possibly a combination of both), mountaineering, paragliding, water sports and winter skiing. There are also tennis courts, bowling halls, stadiums and sport halls in the town as well as riding schools and golf courses in the surrounding areas. See www.usti-nad-labem.cz for more detail. There are a number of nature sites near the town of Ústí nad Labem,

some true European rarities. These include for instance the Vrkoč natural monument (a column such as a formation of basalt), the 12 metre high Vaňov waterfall (4 km from the city centre), Kozí vrch (a craggy massif with abundant thermophilic vegetation).





The official currency in the Czechia is the Czech Crown – česká koruna (CZK). Exchange rates approx.:

1 EUR = 25 CZK

1 USD = 23 CZK

The Czechia is divided into 14 regions with municipalities: Brno, České Budějovice, Hradec Králové, Jihlava, Karlovy Vary, Liberec, Olomouc, Ostrava, Pardubice, Plzeň, Praha, Ústí nad Labem and Zlín. It has a transitional climate between maritime and continental characterized by hot, showery summers and cold, snowy winters and generally changeable conditions. On a typical day in Czechia between June and August the maximum temperature is between 15°C and 25°C. Temperatures from December to February drop below

freezing. Wide variations are common, with temperatures of +35°C in summer and –20°C in winter not being very unusual.

Czechia can be rightly called the cross-roads of European civilizations. It is situated approximately in the geographical centre of Europe and has an area of 78,866 sq. km. It is a landlocked country 326 km from the Baltic and 822 km from Adriatic sea. It shares borders with Germany, Poland,



Austria and Slovakia. The highest point of elevation is the peak of Mt. Sněžka (1,603 m above sea level) and the lowest point of elevation is near Hřensko where the River Labe leaves the Czech territory (117 m above sea level).

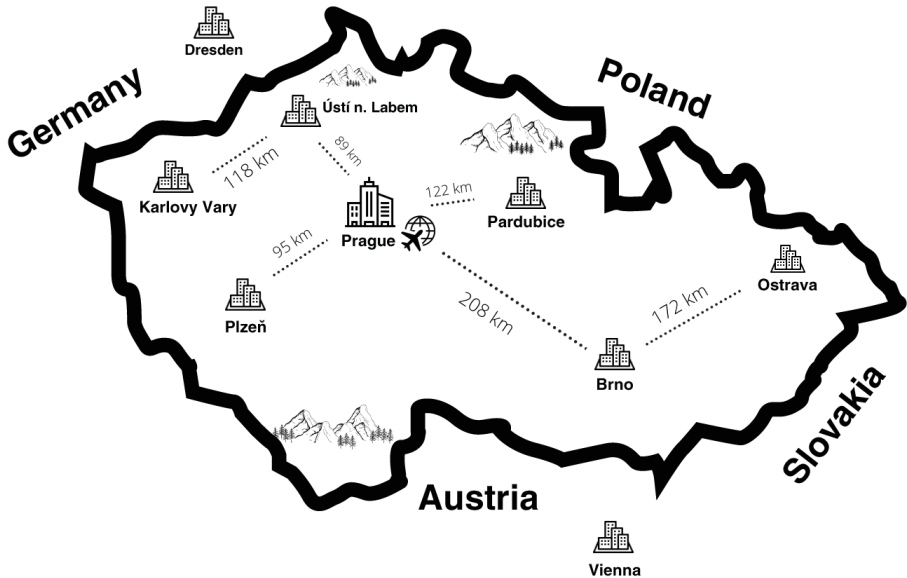
Some sites in Czechia have been listed in UNESCO's World heritage Fund:

Praha, Kutná Hora, Český Krumlov, Telč, Lednice-Valtice area, Zelená Hora Church of St. John Nepomuk, Castle and gardens of Kroměříž, Holašovice, Litomyšl castle, Holy Trinity Column in Olomouc, Tugendhat Villa in Brno, The Jewish Quarter and St. Procopius' Basilica in Třebíč.

SOME HISTORICAL DATA

- End of the 5th and beginning of the 6th century – arrival of Slavs in the area of present-day Moravia and Slovakia.
- Second half of the 9th century – arrival of Christian missionaries.
- 1306 – a gradual strengthening of the Czech state during the reign of the Premyslid dynasty. 1346–1378 – the peak in prestige and power of the Kingdom of Bohemia during the reign of Charles IV.
- Beginning of the 15th century – a crisis of state leads to the Hussite movement.
- 1526 – the Habsburg dynasty succeeds to the throne of Bohemia – the formation of a multinational empire.
- 1620 – the defeat of the Bohemian Estates at the Battle of the White Mountain, continued centralization of the Habsburg Empire.
- 1918, October – foundation of an independent state of Czechs and Slovaks (Czechoslovakia).
- 1939, March – 1945, May – German occupation.
- 1948, February – Communist takeover.
- 1968, August – Soviet-led invasion of Czechoslovakia by Warsaw Pact countries brings an end to the "Prague Spring" and the Communist Party's attempt to build "Socialism with a human face".
- 1989, November – fall of the Communist regime.

- 1993, January – Czechia founded after the split of Czechoslovakia.
- 2004, May – Czechia becomes a member of the EU.



**Jan Evangelista Purkyně University
in Ústí nad Labem
Czechia**

**FOREIGN STUDENT GUIDE
Academic Year 2024/2025**

www.UJEP.cz

